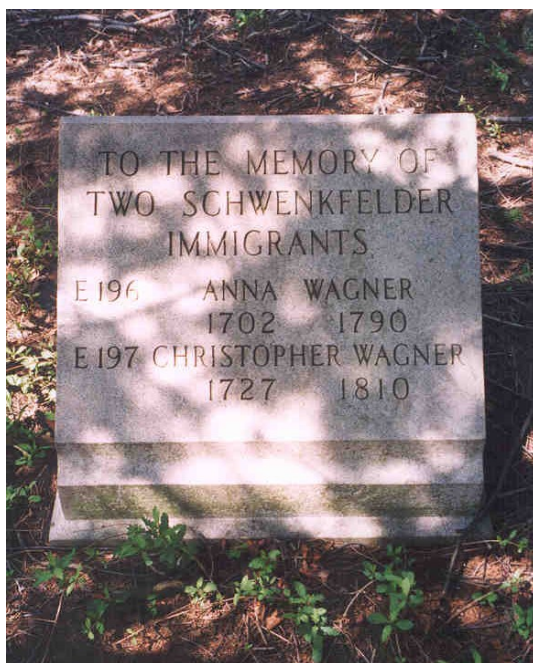


Christopher Wagner Cemetery

Private cemetery on former John K. Heebner Farm, Heebner Road, Worcester Township, Montgomery County, PA.

From intersection of Route 73 (Skeppack Pike) and Route 363 (Valley Forge Road), go south on Route 363 for about 1 mile. Turn right onto Heebner Road traveling 0.8 miles. Pass the former Heebner farmhouse on the left after Hollow Road. The Wagner burial ground is located on the property in a wooded area.



Immigrant Monument, Christopher Wagner Cemetery (photo 2003)



[E 196]
Anna Wagner
1702-1790

[Mother of
Christopher Wagner]



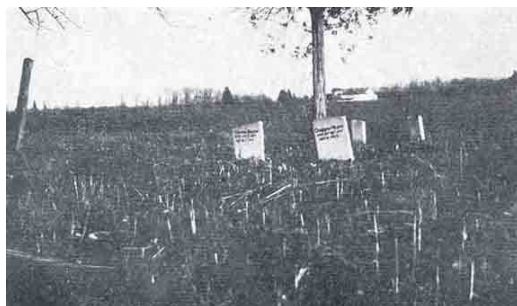
[E 197]
Christopher Wagner
1727-**1810**/1817

Schwenkfeldian, Vol. 1,
pg 32, December 1903 states:

*"CHRISTOPHER WAGNER
died 28th No'r 1810
aged 82 years"*

And his wife (a Schwenkfelder
descendant [nee Heebner],
but not an immigrant):

*"SUSANNA WAGNER
died July 2, 1817
aged 82 yr. 8 mo"*



GR plate 132. "Tombstones of Christopher and Susanna (Heebner) Wagner [196-1] in private cemetery on the John K. Heebner farm in Worcester Township, Pennsylvania" (photo before 1923)